

ROVACOM

IQ

Table of Contents

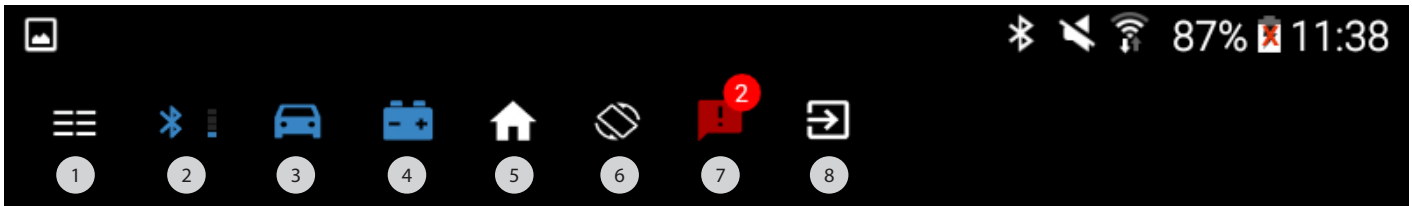
Toolbar	3
Side Menu Shortcut	3
Bluetooth Status	4
Vehicle connection Status	4
Vehicle Battery Voltage Status	5
Home Shortcut	5
Rotation Status	5
Notification Status	6
Left Side Menu	7
Display Options	8
Versions	8
VCIQ Status	9
VCIQ Password	9
Notifications	10

Note: Due to software changes and device variations, The contents of this document may vary slightly.

Toolbar

Toolbar General overview:

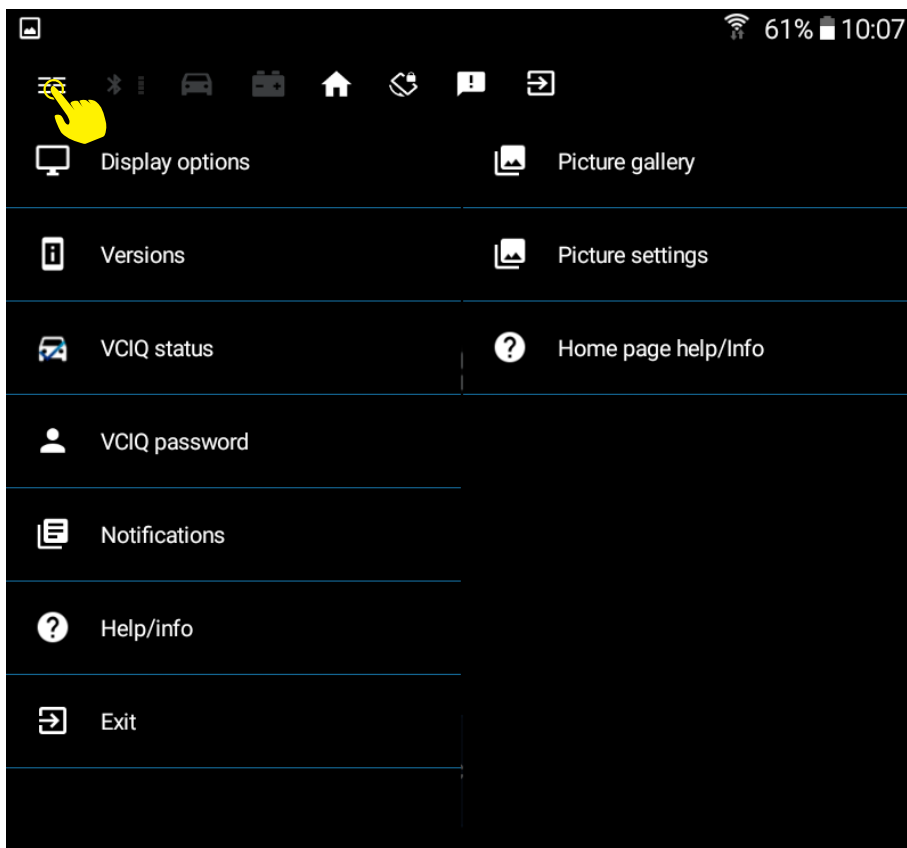
The toolbar remains present throughout the applications pages and provides status indicators and submenus regarding the basic status of the VCIQ. This menu is customisable via the left hand menu.



1. Side menu shortcut
2. Bluetooth status
3. Vehicle connection Status
4. Vehicle Battery Voltage Status
5. Home shortcut
6. Rotation Status
7. Notification Status
8. Exit Shortcut

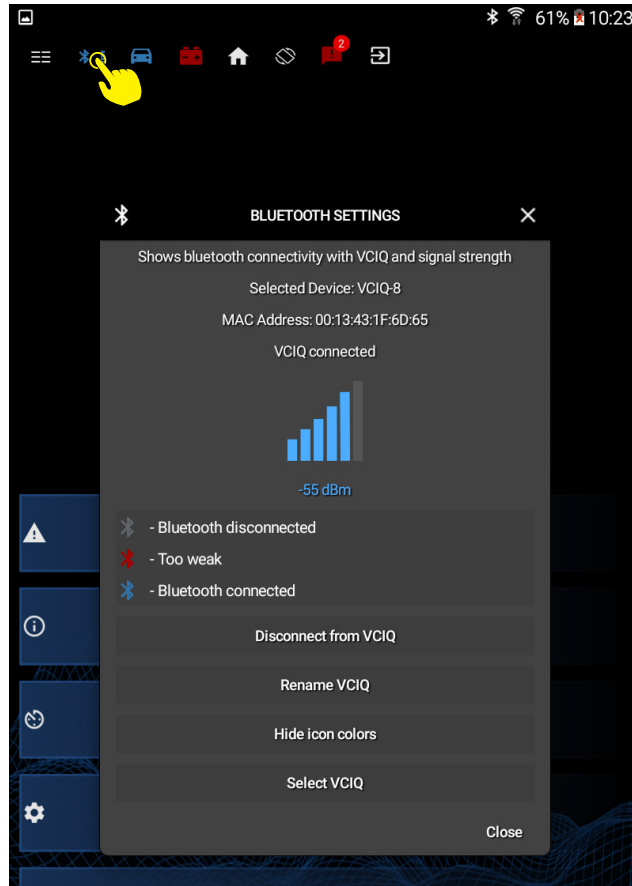
1. Side menu shortcut:

Side Menu shortcut: Selecting this icon will open both the left hand menu and right hand menus simultaneously. Either side menu can be selected by swiping inwards from the respective side. The left menu is a generalised menu regarding base settings for the Rovacom-IQ while the right hand menu provides a specific menu for the current application/page you are running.



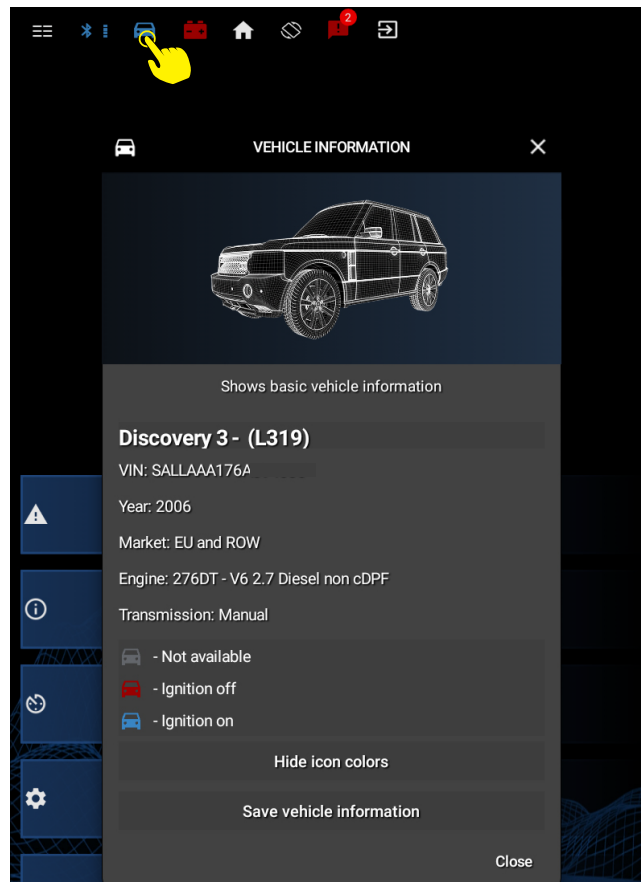
2. Bluetooth status:

This menu displays the Bluetooth connection details and signal strength, whilst allowing you to disconnect from your vciq, rename your vciq and toggle icon colour preferences.



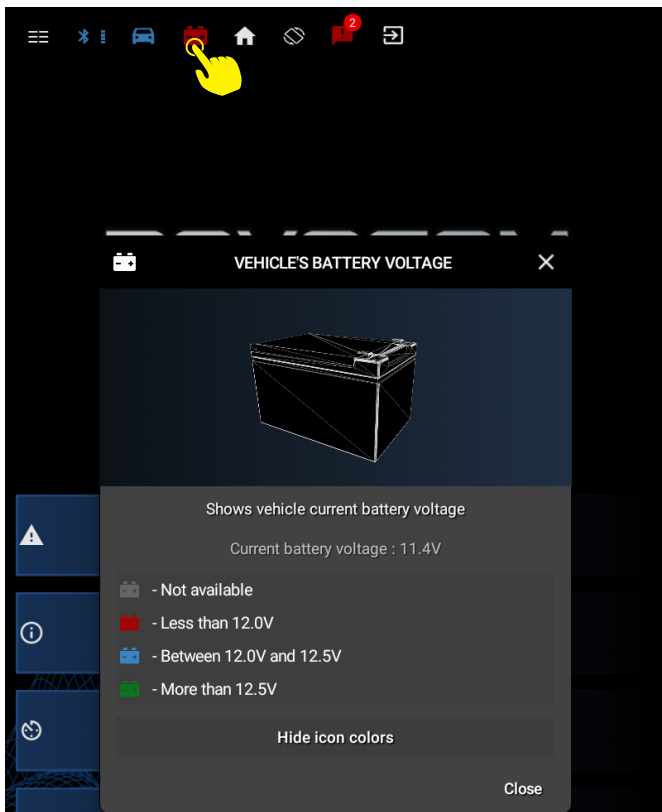
3. Vehicle connection Status:

As the name implies, this displays basic information from the vehicle you are connected to, gives you the option to save this information, and gives the option to toggle icon colour preference. The VCIQ will automatically save the basic vehicle information the first time it connects to a vehicle by default, this selection enables you to update that basic information or save it for a different vehicle.



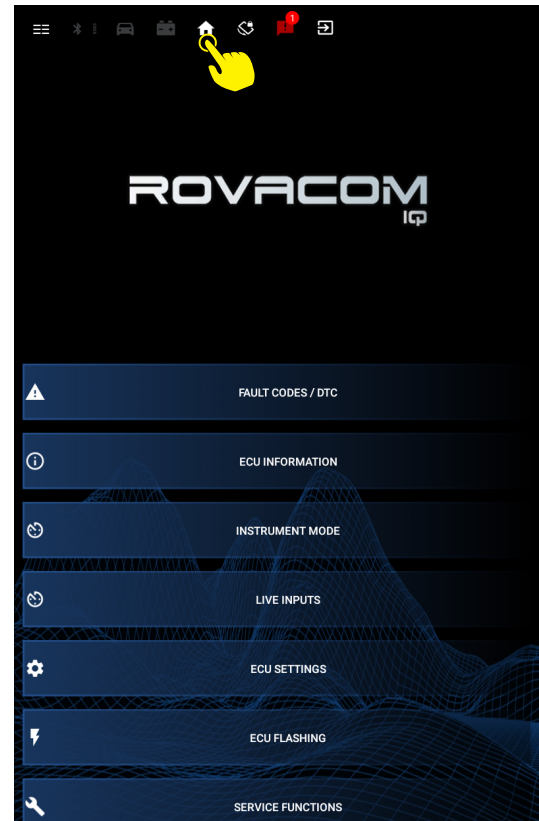
4. Vehicle Battery Voltage Status:

Displays the current vehicle voltage and allows you to toggle icon colour preferences.



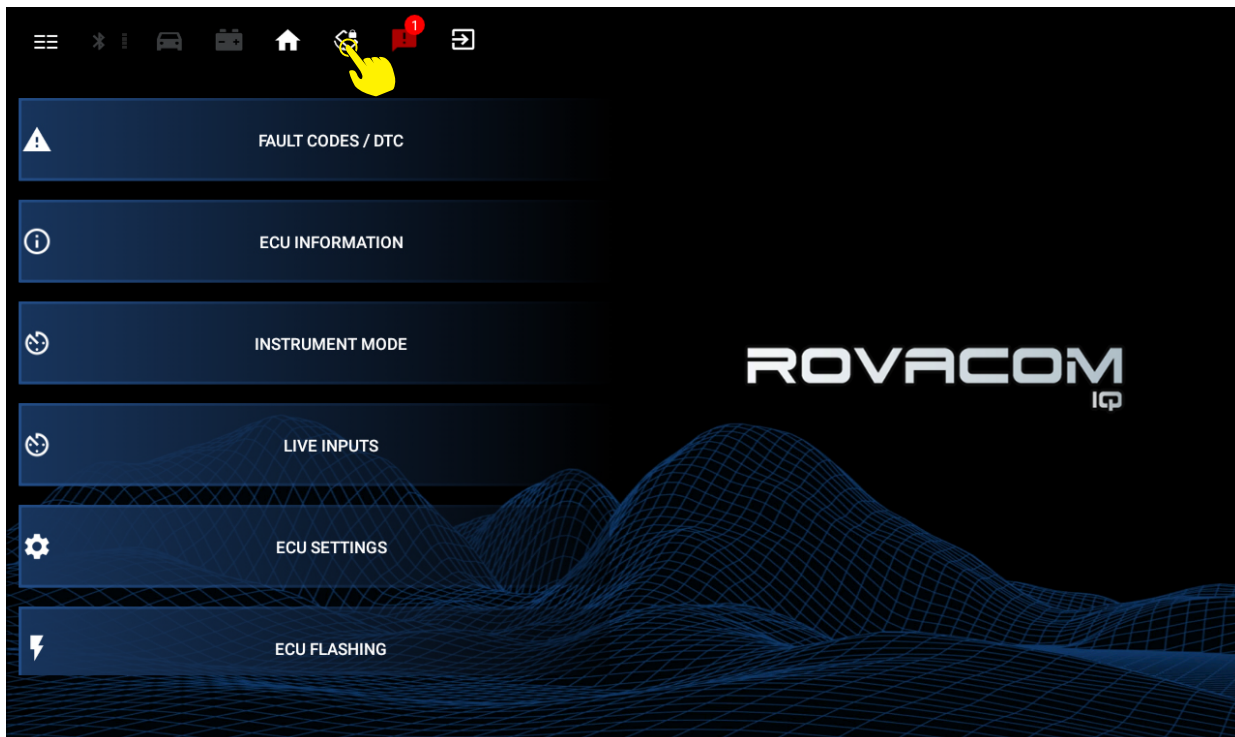
5. Home shortcut:

Returns you to home screen.



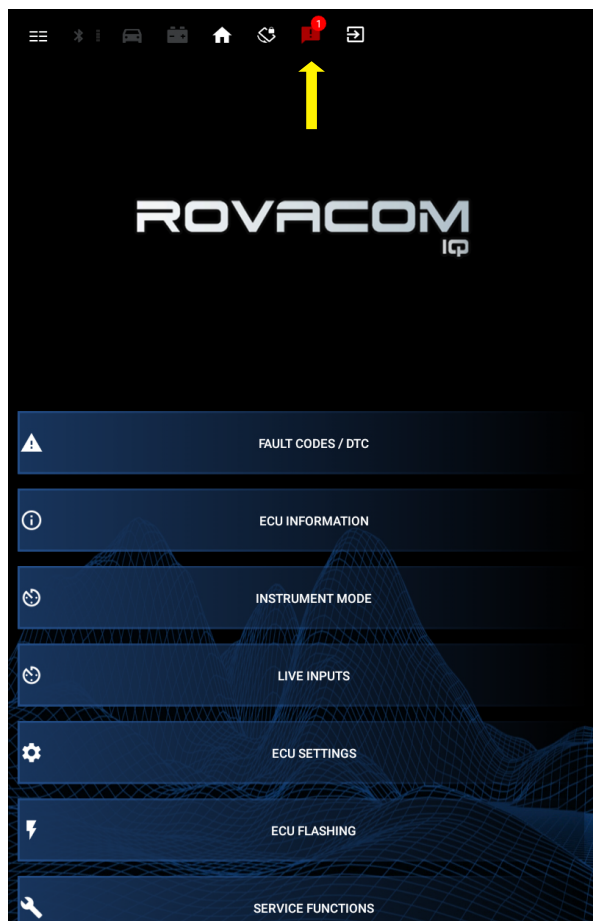
6. Rotation Status:

Allows you to toggle rotation on the device.



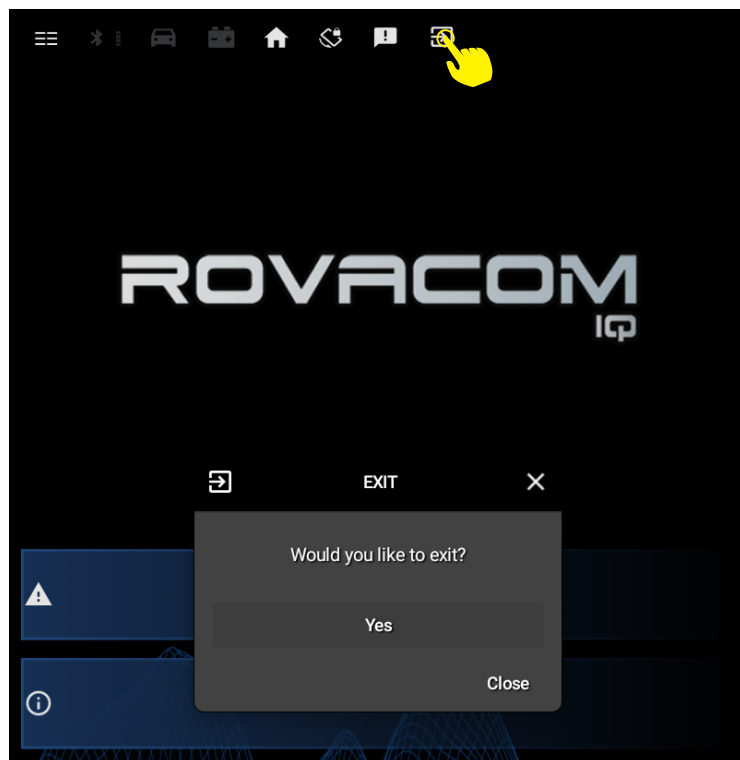
7. Notification Status:

When the icon is red identifies one or more notifications.



8. Exit Shortcut:

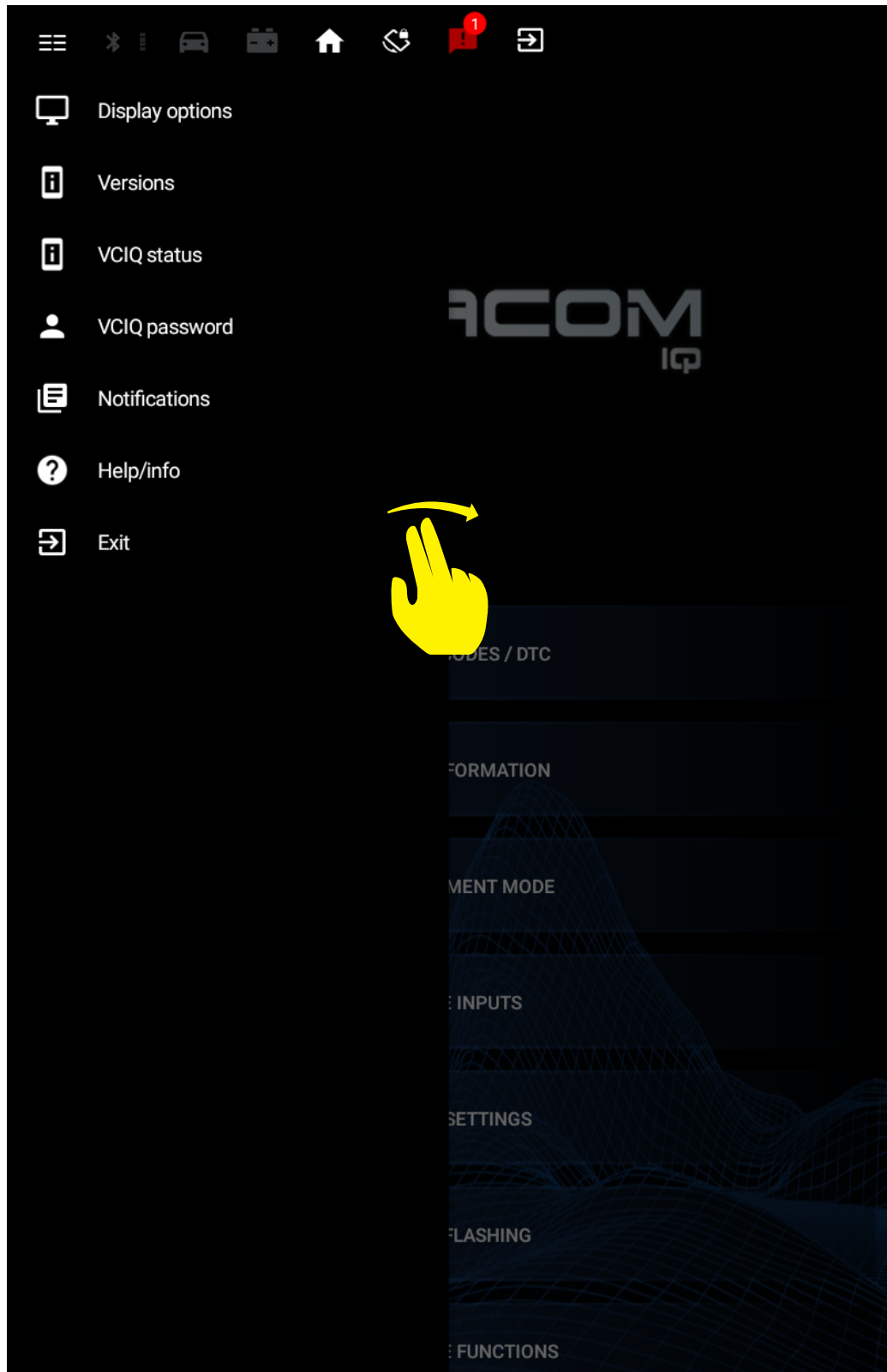
Allows you to exit the application.



LEFT SIDE MENU

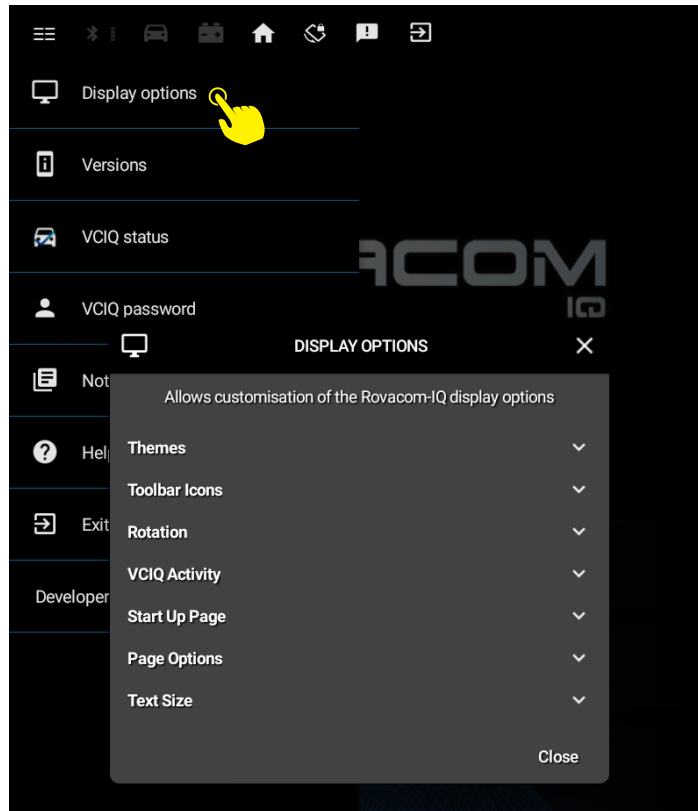
Left Menu General Overview:

Swipe left edge inwards opening options and purpose of left menu only for Rovacom IQ system specific options and that the Left menu is available from all diagnostic function pages



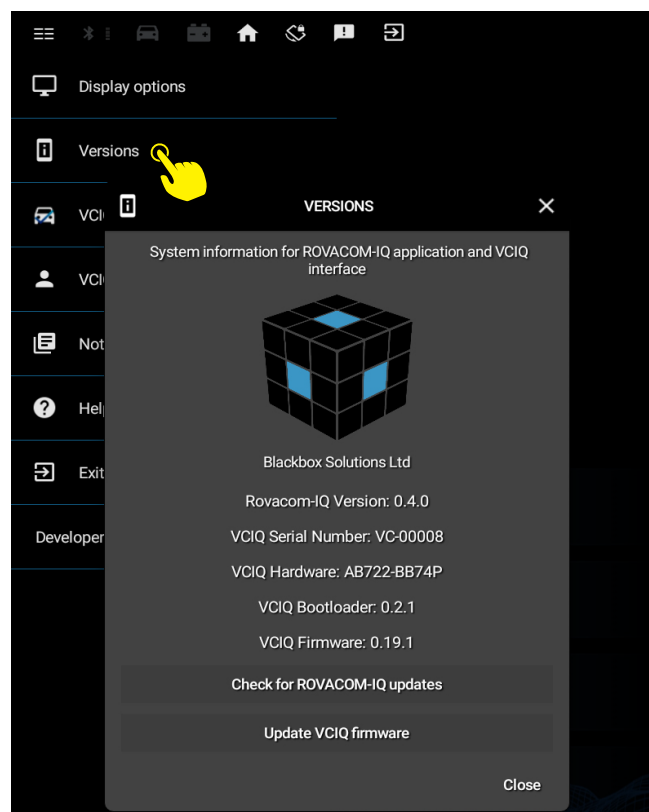
Display Options:

- Display options: This brings up the following options:
- Themes: A selection of colour themes.
- Toolbar Icons: Allows you to toggle which toolbar icons you wish to display/remove from the toolbar menu
- Rotation: An autorotation toggle.
- VCIQ Activity: Provides an activity notification toggle for the toolbar
- Startup Page: Gives the capability to select the homepage on loading the application
- Page Options: Allows you to hide/relist entire pages from the Rovacom-IQ menu
- Text Size: Gives you 3 options to vary the text size.



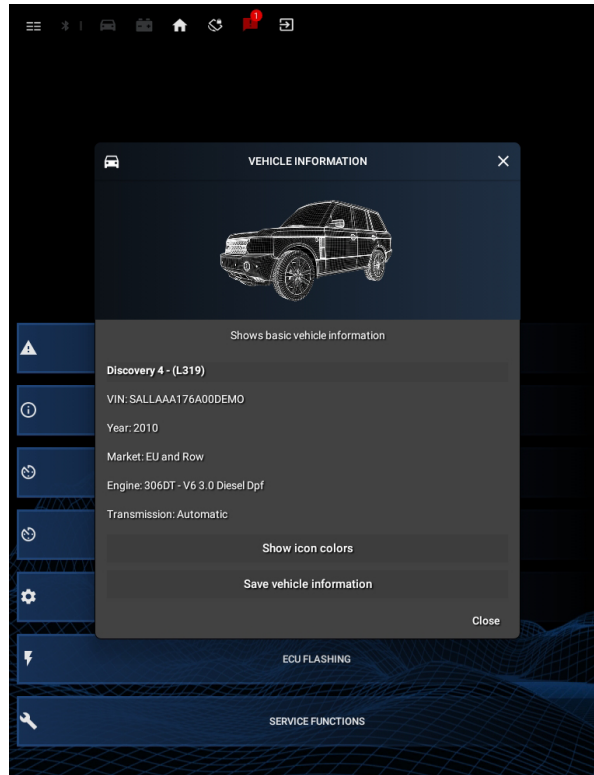
Versions:

Displays system information for the Rovacom-IQ application and the VCIQ interface whilst providing the option to check and perform software and firmware updates.



VCIQ Status:

Displays the authorised vehicles related to the VCIQ based on the vehicle model and VIN, whilst listing the licencing information per model.

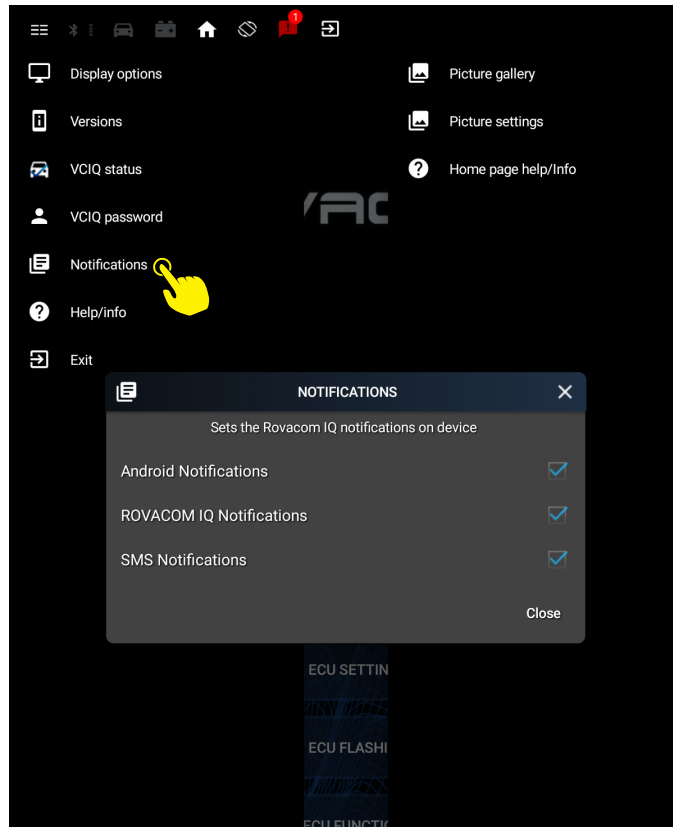


4: VCIQ Password:

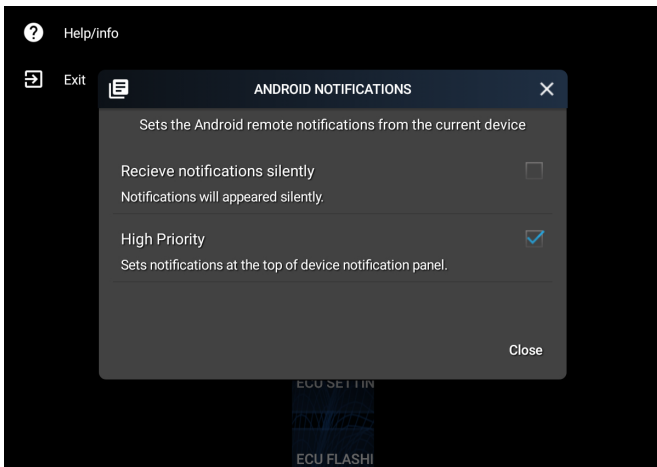
Allows you to add the Master password for VCIQ. It also gives you the ability to change the Master password to User password by adding your own preferred password.

5: Notifications

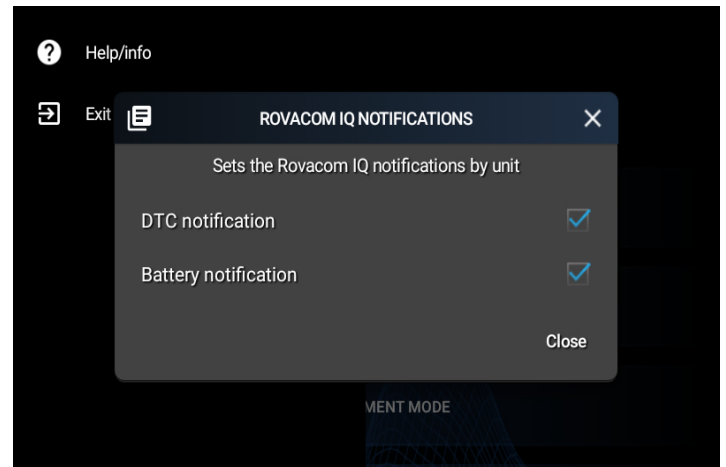
Give you the option to select which notifications you wish to receive.



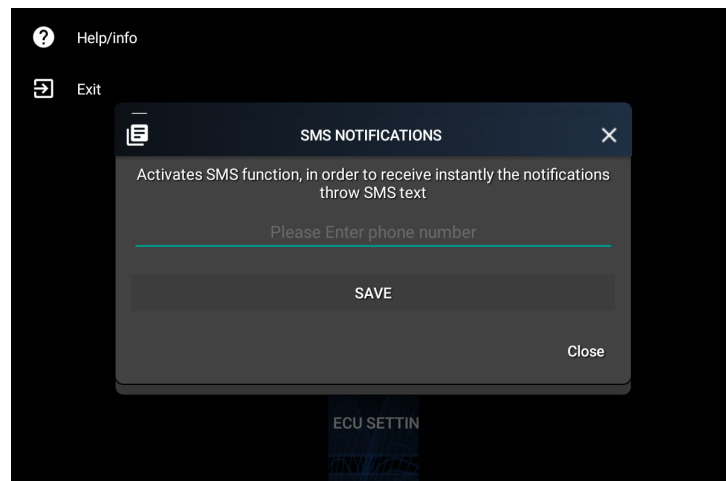
Android Notifications



ROVACOM IQ Notifications

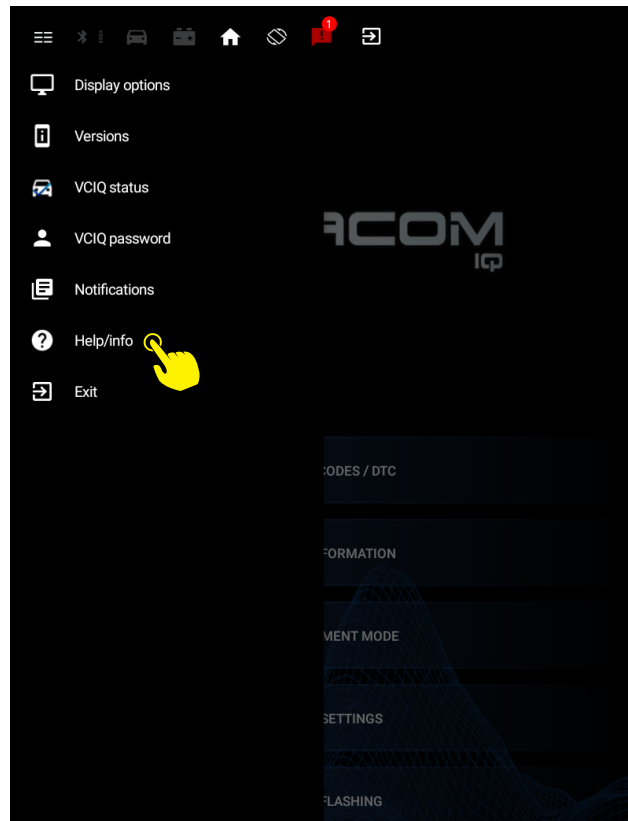


SMS Notifications



6: Help / Info

Displays a list of interactive local and online help resources



7: Exit

Allows you to exit the application.

